

SOUTHEAST ASIA & THE GULF
HOME & APARTMENT

Volume 25 No 6

AED55 SG\$12.95 RM24.95

HK\$65 BHT300 INCLUDES GST

FOR SALE IN INDONESIA

Trendsideas.com

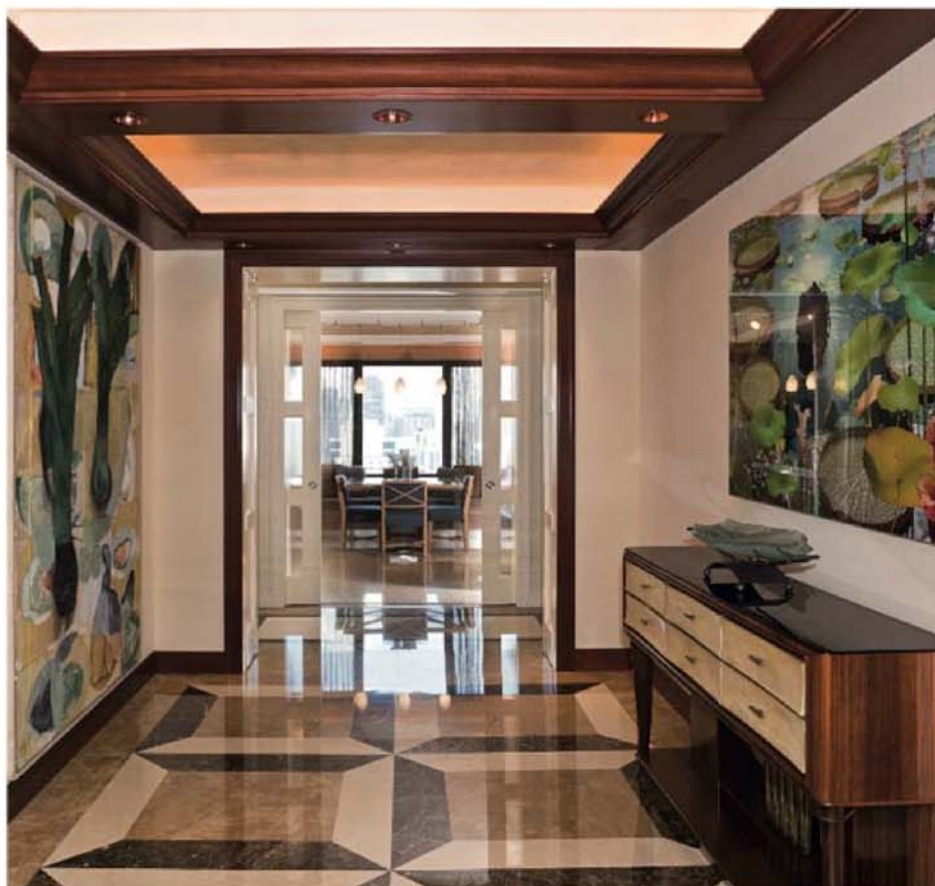
TRENDS



ISBN 1869529464



9 781869 529468



A few of my favourite things

A collection of mid-century furniture and artwork fills this Manhattan apartment

Possibly the most enjoyable way to appreciate a large, eclectic collection of art and objects is when it is arranged in its natural setting – decorating the rooms of a private home.

The owners of this apartment in The Sovereign, a Sigmund Sommer-designed 47-storey building on New York's Upper East Side, have been avid collectors of art and mid-century modern furniture for a number of years. As their collection expanded, so too did their need for space to display it.

When it was apparent their apartment on the 28th floor of The Sovereign was too small for them and their collectables, they purchased the apartment next door and expanded into that. The increased floor space gave them the chance to spread out and enjoy their favourite pieces.

Owner Marla Helene says she has always been fascinated by art and antiques, particularly furniture.

"My objective with the apartment design was to create a clean and modern space that allowed the historical impact of

the various pieces of furniture and works of art to be appreciated," she says.

Architect Alan Berman was called on to refit the double apartment to provide more expansive living areas, gallery space for the artworks, an appropriate setting for the furniture, a large, separate master wing and bedrooms for the children.

The remodelled apartment radiates out from a grand foyer and central hallway that doubles as an art gallery. Living rooms, family spaces, a kitchen and dining rooms open off it, and a second hall leads



directly to the private master suite.

"We chose a neutral colour scheme for the walls to create a sensitive backdrop for showcasing the art and furnishings," says Berman.

Walls in the main living areas have a Venetian plaster finish that is painted in a soft shade of white. Mahogany floors provide a background for the owners' handmade silk rugs.

The living room is divided into two sections, with the more casual area including a grand piano, and sofas and chairs.



Facing page: This apartment was remodelled so the owners could display their collection of mid-century modern furniture and art. The 1930s console in the foyer is by Italian furniture maker Gitano Borsani, and the photograph above it, *World #7*, is by Rudd Van Empel. The painting on the opposite wall is *Leeks*, by Robert Juarez.

Above: The foyer leads to the main living room. A neutral design scheme is a sympathetic backdrop for art and mid-century modern furniture.

Left: *Flowers*, the bronze sculpture on the balcony, is by Donald Baechler.







Preceding pages: The living room looks through to the library and a Richard Avedon lithograph, Nastassja Kinski and the Serpent. The Art Deco bronze on the sofa table is by Pierre Le Faguays.

Top: Mahogany-paneled walls and a leather-covered floor give the study a masculine tone.

Above: Built-in cabinetry conceals the audiovisual equipment in the media room.

Right: French designer Maxime Old made the dining table; the chandeliers are 1940s Murano glass and the painting is by Terry Winters.

Most of these represent American and French mid-century modern furniture movements. Two chairs with gilded arms were made by 1950s French furniture designer Royère.

"Most of the furniture has been upholstered in solid colours, rather than more active prints. The resulting monochromatic scheme not only creates a more relaxing interior, but also allows the art to stand out," says the owner.

Paintings and sculptures include an original work by Brazilian photographer







Above: White shag pile carpet and pink velvet coverings on the daybed combine with the curved built-in cabinetry to create a '60s-inspired bedroom.

Facing page top: The master suite has spectacular city views. White fur-covered lamps by the bed have sterling silver hardware for a jewelled look.

Facing page lower: Masculine blues and browns are well suited to a boy's bedroom. The 1960s lounge chair is by Bruno Mathsson.

 To view additional images online, visit [Trendsideas.com/go/22437](https://www.trendsideas.com/go/22437)

Vik Muniz, Murano glass from the 1950s by Anzolo Fuga and blown by Giulio Ferro, and a delicate Art Deco bronze by French sculptor Pierre Le Faguays.

Opening off the more formal part of the living area is a study, dominated by an original Richard Avedon lithograph of Nastassja Kinski. For a more masculine atmosphere, teak wood panels line the walls, and the floor is finished in leather. The desk was made in the 1950s by Italian furniture designer Gio Ponti.

The daughter's bedroom design draws

its inspiration from the swinging sixties. Its central feature is a large daybed with a padded pink velvet headboard and pink velvet loose cover. Thick, white shag pile carpet, fluffy pink-and-white cushions and built-in desks and shelves complete the mod look.

A blue and brown colour scheme makes an appropriate background for a bedroom that is fitted out for a boy, with built-in shelves for sports trophies, storage cupboards and a study alcove. To provide as much space as possible for relaxation,



the room has a Murphy bed.

The apartment also includes a media room with high-end projection and audiovisual equipment. Most of the components are concealed behind purpose-designed cabinetry that lines one wall. A projection screen, which drops down in front of the bookcase, is concealed in the ceiling.

The entire house is operated using a Crestron automation system. As well as the home entertainment equipment, this system controls lighting, curtains, heating and security.

Architect: Alan Berman, Archetype, LLC (New York)

Project architect: Warren Calwil, AIA, Archetype

Interior designer: Jean Charles Moriniere, Trade France, Inc

Kitchen designer: Archetype; European Country Kitchens

Builder: New York Artistic – General Contractors

Doors: Skyline Windows, Truestyle custom doors

Flooring: Pieneta Legno; marble from ABC Marble

Paints: Dutch lacquer from Schroeder; Venetian plasters from See Painting

Lighting: Iris downlights; Regiani; Lucifer; Murano Glass; Tech Lighting

Sound system: Crestron System; direct TV

Speakers, subwoofer: Snell Acoustics

Projector: Runco

Televisions/video: Sony; Rotel

Audiovisual installation: Design Installations

Media: Request Multimedia

Ceiling mounting: Chief Manufacturing

Concealed motorised projection screen:

Stewart FilmScreen

Lighting control system: Lutron Homeworks

Blinds: Electron, Somft

Furniture and artworks: From owners' collection

Story by Mary Webb

Photography by Jamie Cobeldick