

T



BATHROOM

Volume 24 No 10

\$10.95

Trendsideas.com

TRENDS

\$10.95US





Lavish retreat

Separated by a long gallery from the rest of the house, this master suite is designed to emulate a luxurious European hotel



Above: Like the rest of the house, the master bedroom of this New York apartment is decorated with pieces from the owners' collection of mid-century modern furniture and artwork. The master suite is at the end of a gallery-style hallway with access to the bathroom through doors to the right of the bed. To create a rich, jeweled look, the hardware on the lamps beside the bed is in sterling silver.

Two essential ingredients for a relaxing retreat are peace and quiet. And in a busy family home, both of these are often in short supply.

Architect Alan Berman was briefed by the owners of a 28th-floor apartment overlooking the East River, south of the Queensboro Bridge.

"The owners wanted their master bedroom wing to be quite separate from the rest of the apartment, with a private entrance. It had to be quiet, and the bathroom was to be a spa-like environment," says Berman.

To achieve this level of separation, the owners needed more space, and so they purchased the

apartment next door. The living and dining room of the neighboring apartment became their new bedroom, and the kitchen became their bathroom.

The new master bedroom wing is located at the end of a gallery-style hallway that opens off the grand entrance foyer, ensuring it is private and well away from the main living areas of the house.

Double pocket sliding doors open from a smaller hall within the suite into the first section of the bathroom, which contains two separate vanities on either side of the space. On one side is a custom-built make-up vanity with space for a chair, and the other side includes two basins. A large spa tub is

The gallery opens out from this area, providing access to a steam shower enclosure and toilet room. Large mirrors, which conceal medicine cabinets, run along one side wall, and a spacious walk-in linen closet is hidden behind mirrored doors on the wall at the far end.

Large cream-colored onyx tiles were chosen to finish the walls and part of the bathroom floor. The shower enclosure has a mix of onyx slabs for the seat and tiles on the floor and walls, and the vanities are topped with slabs of the same stone. A mosaic-tiled pattern adds energy to the floor of the



Above: The entrance to

the bathroom is through double glass sliding doors opposite the large tub. The washroom area includes two onyx-topped vanities, one for putting on make up and second with two basins. Murano glass vases by Anselmo Fuga are on glass shelves in the columns flanking the tub.

Left: The doors open into the hall and bedroom.

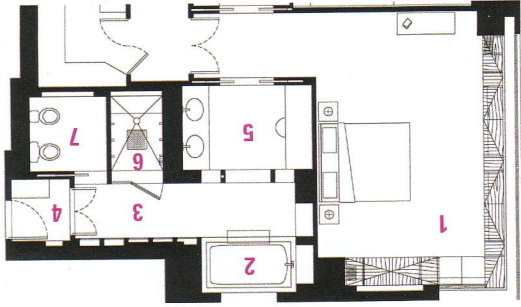




gallery through the center of the bathroom. Bands of a darker-toned onyx accent the walls, and wenge wood is used for the vanities and the trim around mirrors and doors.

Coffered ceilings along the length of the gallery add a sense of grandeur to the space, which is lit by Murano glass chandeliers. Matching pairs of sconces on either side of the tub and make-up vanity were custom made in Murano glass.

"The whole flavor of this expansive master suite, from the richness of the onyx and the wenge to the mosaic floor, is reminiscent of a Greek or Egyptian spa," says the architect.



Facing page: The make-up vanity was custom designed.

Above left: Onyx tiles and slabs are on the seat, floor and walls of the shower.

Above: The toilet is a spacious area opening off a gallery.

Legend for plan: 1 bedroom, 2 bathtub, 3 gallery, 4 linen closet, 5 washroom, 6 shower, 7 toilet.



Architect: Alan Berman, Archetype, LLC (New York)
Project architect: Warren Calwil, AIA, Archetype
Interior design: Jean Charles Moriniere, Trade France Inc
Art consultant: Barbara Schwartz, Inc, Artists and Artisans
Builder: New York Artistic – General Contractors
Doors: Truestyle custom doors
Tub: Ultrabath, acrylic air jet
Basin: Kallista
Vanity: Custom in Brazilian Rosewood; onyx countertop
Faucets: Kallista; Barbara Barot in polished nickel
Hot water system: Steam Mist
Shower fittings: Dornbracht; Barbara Barot rain shower
Shower enclosure: Manhattan shade and glass
Flooring: Crema onyx from Artistic Tiles; onyx; mosaic tiles
Wallcoverings: Venetian plaster; tiles; onyx
Toilet and bidet: Toto Pacifica
Lighting: Murano antique sconces; Murano CL6 new venetian custom lamps
Bedhead: Upholstered fabric from Nancy Corzine
Lights above bed: Murano antique sconces; Murano CL6 new venetian custom lamps

Story by Mary Webb
Photography by Jamie Cobeldick

This page: A mirror-lined gallery provides the connecting link between the bedroom and various sections of the bathroom. Both the shower and toilet room open off it, while the bathtub is in an alcove at one end. The mirrors on the side wall conceal medicine cabinets and behind the glass on the end wall is a walk-in linen closet.

